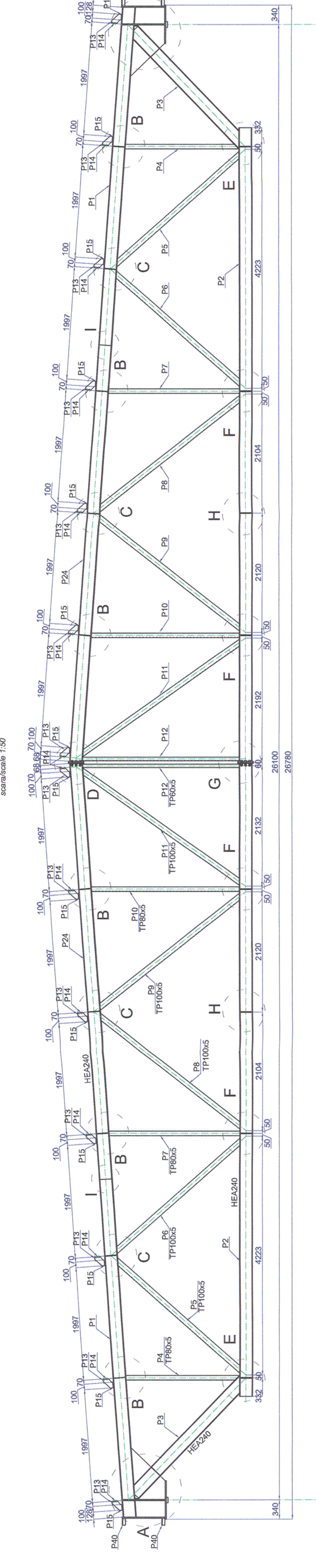
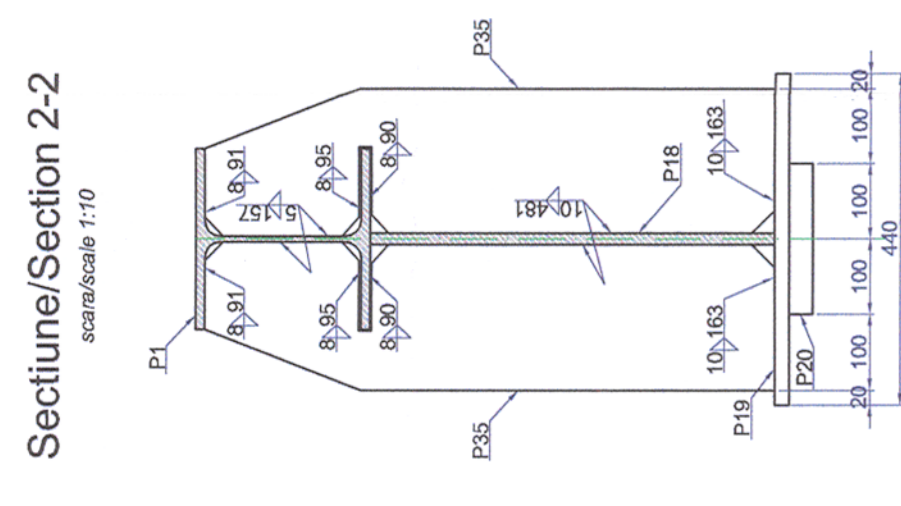


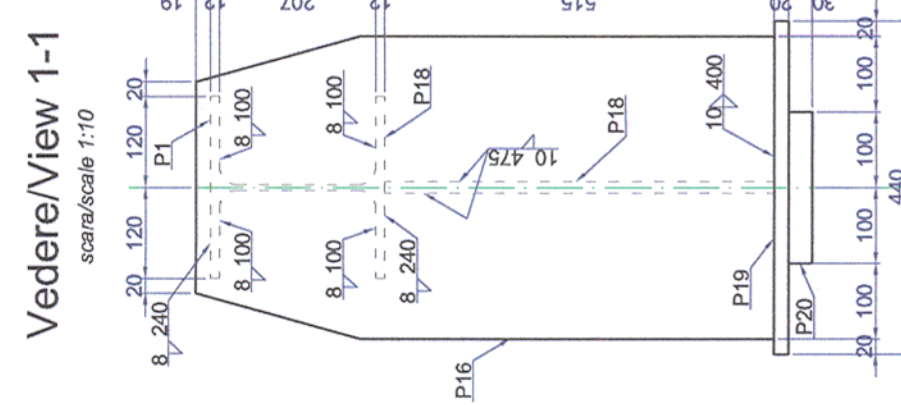
### Elevatie ferma / Lattice truss elevation



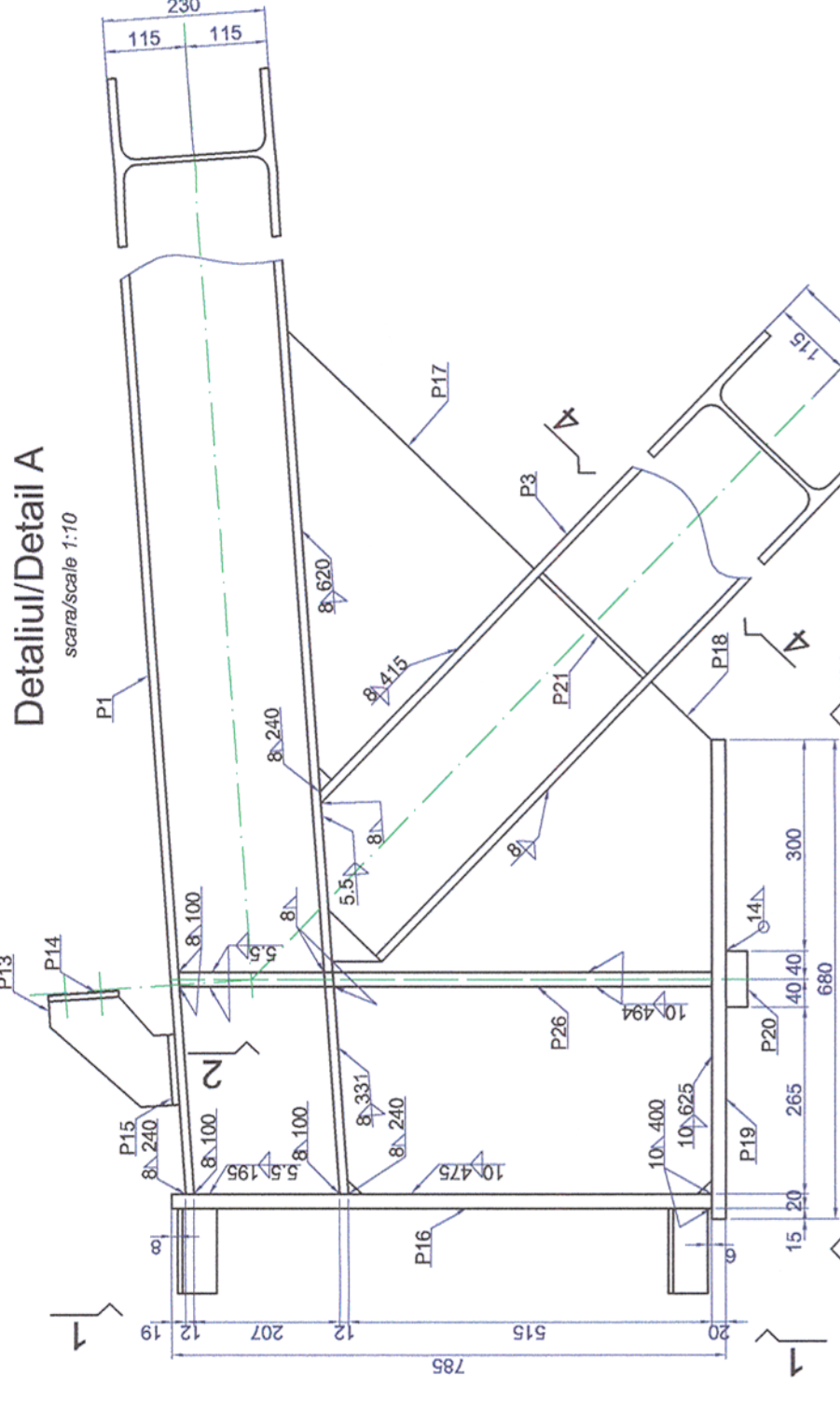
### Sectiune/Section 2-2



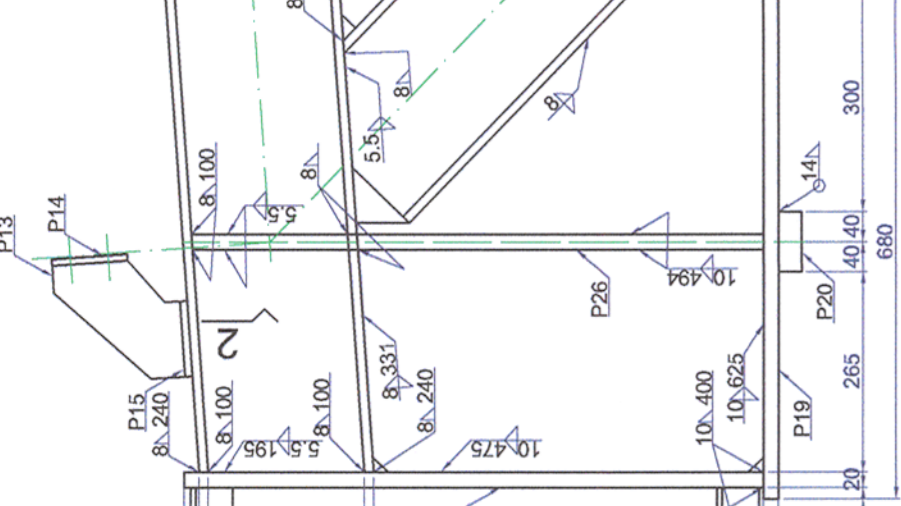
### Vedere/View 1-1



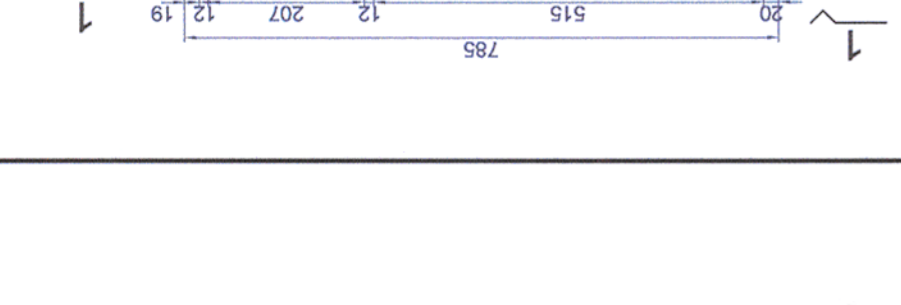
### Detaliu/Detail A



### Vedere/View 3-3



### Detaliu/Detail B



Debitare/Cutting P16  
400x765-50

Debitare/Cutting P26  
160x755-50

Debitare/Cutting P18  
538x727-15

Debitare/Cutting P19  
440x690-20

Debitare/Cutting P17  
415x487-15

Debitare/Cutting P22  
270x360-20

Debitare/Cutting P20  
60x200-30

Debitare/Cutting P25  
200x176-10

Sectiune / Section 13-13  
scara/scale 1:10

Detaliu caracteristic suport pane/  
Characteristic detail purlin support  
scara/scale 1:10

Debitare/Cutting P1  
HEA240-6000

Debitare/Cutting P24  
HEA240-7884

Debitare/Cutting P2  
HEA240-12000

Debitare/Cutting P3  
HEA240-2811

Debitare/Cutting P4  
TP500x605-2005

Debitare/Cutting P5  
TP100x100x5-266

Debitare/Cutting P6  
TP100x100x5-2973

Debitare/Cutting P14  
scara/scale 1:10

Debitare/Cutting P13  
scara/scale 1:10

Debitare/Cutting P15  
165x100x8

Debitare/Cutting P7  
TP500x605-2573

Debitare/Cutting P8  
TP100x100x5-3294

Debitare/Cutting P9  
TP100x100x5-3269

Debitare/Cutting P10  
TP500x605-2616

Debitare/Cutting P11  
TP100x100x5-3457

Debitare/Cutting P12  
TP500x605-2768

Vedere/View 6-6  
scara/scale 1:10

Detaliu/Detail C  
scara/scale 1:10

Vedere/View 11-11  
scara/scale 1:10

Detaliu/Detail G  
scara/scale 1:10

Detaliu/Detail H  
scara/scale 1:10

Detaliu/Detail I  
scara/scale 1:10

Detaliu/Detail E  
scara/scale 1:10

Detaliu/Detail F  
scara/scale 1:10

Detaliu/Detail D  
scara/scale 1:10

Vedere/View 4-4  
scara/scale 1:10

Vedere/View 8-8  
scara/scale 1:10

Vedere/View 9-9  
scara/scale 1:10

Vedere/View 10-10  
scara/scale 1:10

Vedere/View 5-5  
scara/scale 1:10

Vedere/View 12-12  
scara/scale 1:10

Vedere/View 1  
scara/scale 1:10

Vedere/View 2  
scara/scale 1:10

Vedere/View 3  
scara/scale 1:10

**LATTICE TRUSS ROLLED STEEL EXTRACT**

Poz	Secțiunea	Lungime elem total	Buc / elem	Nr. elem total	Ghcuc (Gm)	Glelem (Gm)	G total	Calitate		
P1	HEA240	6000	2	11	22	60.30	361.80	7959.60	S355N	
P2	HEA240	11200	2	11	22	60.30	675.36	1350.72	14857.92	S355N
P3	HEA240	2811	2	11	22	60.30	169.50	339.01	3729.07	S355N
P4	TP100x100x5	2004	2	11	22	11.60	23.25	46.49	511.42	S355N
P5	TP100x100x5	2973	2	11	22	14.70	43.60	87.20	959.20	S355N
P6	TP100x100x5	2973	2	11	22	14.70	43.70	87.41	961.47	S355N
P7	TP100x100x5	3204	2	11	22	11.60	26.83	53.66	590.26	S355N
P8	TP100x100x5	3269	2	11	22	14.70	47.10	94.20	1035.17	S355N
P9	TP100x100x5	3269	2	11	22	14.70	47.35	94.54	1037.69	S355N
P10	TP100x100x5	3457	2	11	22	14.70	50.32	100.68	1117.05	S355N
P11	TP100x100x5	2768	2	11	22	8.42	23.31	46.61	517.74	S355N
P12	TP100x100x5	2768	2	11	22	8.42	23.37	46.74	519.21	S355N
P13	TP100x100x5	130	14	11	154	6.28	1.65	23.07	283.72	S355N
P14	TP100x100x5	130	14	11	154	6.28	1.65	23.07	283.72	S355N
P15	TP100x100x5	130	14	11	154	6.28	1.65	23.07	283.72	S355N
P16	TP100x100x5	130	14	11	154	6.28	1.65	23.07	283.72	S355N
P17	TP100x100x5	130	14	11	154	6.28	1.65	23.07	283.72	S355N
P18	TP100x100x5	130	14	11	154	6.28	1.65	23.07	283.72	S355N
P19	TP100x100x5	130	14	11	154	6.28	1.65	23.07	283.72	S355N
P20	TP100x100x5	130	14	11	154	6.28	1.65	23.07	283.72	S355N
P21	TP100x100x5	130	14	11	154	6.28	1.65	23.07	283.72	S355N
P22	TP100x100x5	130	14	11	154	6.28	1.65	23.07	283.72	S355N
P23	TP100x100x5	130	14	11	154	6.28	1.65	23.07	283.72	S355N
P24	TP100x100x5	130	14	11	154	6.28	1.65	23.07	283.72	S355N
P25	TP100x100x5	130	14	11	154	6.28	1.65	23.07	283.72	S355N
P26	TP100x100x5	130	14	11	154	6.28	1.65	23.07	283.72	S355N
P27	TP100x100x5	130	14	11	154	6.28	1.65	23.07	283.72	S355N
P28	TP100x100x5	130	14	11	154	6.28	1.65	23.07	283.72	S355N
P29	TP100x100x5	130	14	11	154	6.28	1.65	23.07	283.72	S355N
P30	TP100x100x5	130	14	11	154	6.28	1.65	23.07	283.72	S355N
P31	TP100x100x5	130	14	11	154	6.28	1.65	23.07	283.72	S355N
P32	TP100x100x5	130	14	11	154	6.28	1.65	23.07	283.72	S355N
P33	TP100x100x5	130	14	11	154	6.28	1.65	23.07	283.72	S355N
P34	TP100x100x5	130	14	11	154	6.28	1.65	23.07	283.72	S355N
P35	TP100x100x5	130	14	11	154	6.28	1.65	23.07	283.72	S355N
P36	TP100x100x5	130	14	11	154	6.28	1.65	23.07	283.72	S355N
P37	TP100x100x5	130	14	11	154	6.28	1.65	23.07	283.72	S355N
P38	TP100x100x5	130	14	11	154	6.28	1.65	23.07	283.72	S355N
P39	TP100x100x5	130	14	11	154	6.28	1.65	23.07	283.72	S355N
P40	TP100x100x5	130	14	11	154	6.28	1.65	23.07	283.72	S355N
TOTAL								4875.39	51429.21	kg

**CLASA DE IMPORTANTA A CONSTRUCTIEI CONFORM HG nr. 768/97 este (C)  
THE CONSTRUCTION IMPORTANCE CLASS, ACCORDING TO P 1001-2006, IS (III)  
THE IMPORTANCE CATEGORY, ACCORDING TO HG 768/97 IS "C"**

Acest plan anuleaza si inlocuieste planul nr. PT.02.04.14.RE.07.009 elaborat la data 01.2013.  
This layout plan canceled and replaced layout plan no. PT.02.04.14.RE.07.009 prepared on 01.2013.

Verificator / Expert Checker / Expert	Cornelia Stănescu	Referat / Expertiza Report / Expertise
Proiectant / Designer	COMPANIA NATIONALA DE CAI FERATE "CFR SA"	
Aprobat / Approved	Sef de echipa Team leader	Data Date
Verificat / Checked	Expert Cheie Key Expert	01.2013
Subcontractant / Subcontractor	R.Witlan	01.2013
Aprobat / Approved	Adjunct Sef de echipa Deputy Team leader	01.2013
Proiectat / Designed	Inginer Engineer	01.2013
Project 01		35311.1
"Reabilitarea liniei cf. Frontier 2 - Curtici - Simeiza, parte componentă a coridorului IV Tronsoanel 2 - B: Cap Y Barzava - Cap Y Iileu"		
"Rehabilitation of the Railway Line Border - Curtici - Simeiza, component Part of the IV Tronsoanel 2 - B: End Y Barzava - End Y Iileu"		

Denumire desen / Drawing name:  
Clădire mentenanță - Ferma - Stația Săvășiș  
Maintenance building - Lattice truss - Săvășiș Station

Scara / Scale: 1:10; 1:50  
Revizita / Revision: 1/05/2013  
Cod desen / Drawing Code: PT.2B.04.14.RE.07.008  
Nr / No: 08 / 10

- Material/Materials:**  
Cold laminated rolled steel S355N
- The adopted anticorrosive protection is an alkyd system.
  - The primer will be laid on surfaces prepared according to the Technical Specification 30-76.
  - The finishing layers will be 70-85 µm thick.
  - The measurement of the dried layer thickness
  - The result of the last measurement must be between 150-185 µm thickness.
- Sistemul de protecție anticorozivă este un sistem alchidic.
  - Stratul de primărie va fi aplicat pe suprafațe pregătite conform specificațiilor tehnice 30-76.
  - Straturile de finisaj vor avea o grosime de 70-85 µm.
  - Măsurătorile grosimii stratului de vopsea uscată trebuie să fie între 150-185 µm.
  - Rezultatul măsurătorii grosimii stratului de vopsea uscată trebuie să fie între 150-185 µm.
- Toate sudurile nemarcate vor fi de colt și se vor realiza 0,7 lmin  
All the unmarked welds will be corner welds and will have 0,7 lmin
- Historical remark, valid for the entire project:  
The execution is bound to verify all the information from the plans and from the material lists before ordering any materials and to communicate any disparity to the project manager and to the contractor. The contractor will not assume the responsibility about the quality of the materials.
- Note regarding liability:  
Execuțiunile sunt obligate să verifice informațiile din planuri și din extrasele de materiale înainte de comenzierea materialelor și să comunice orice discrepanță proiectantului și contractantului înainte de a comanda materialele. Contractantul nu va avea răspundere asupra calitatii materialelor.